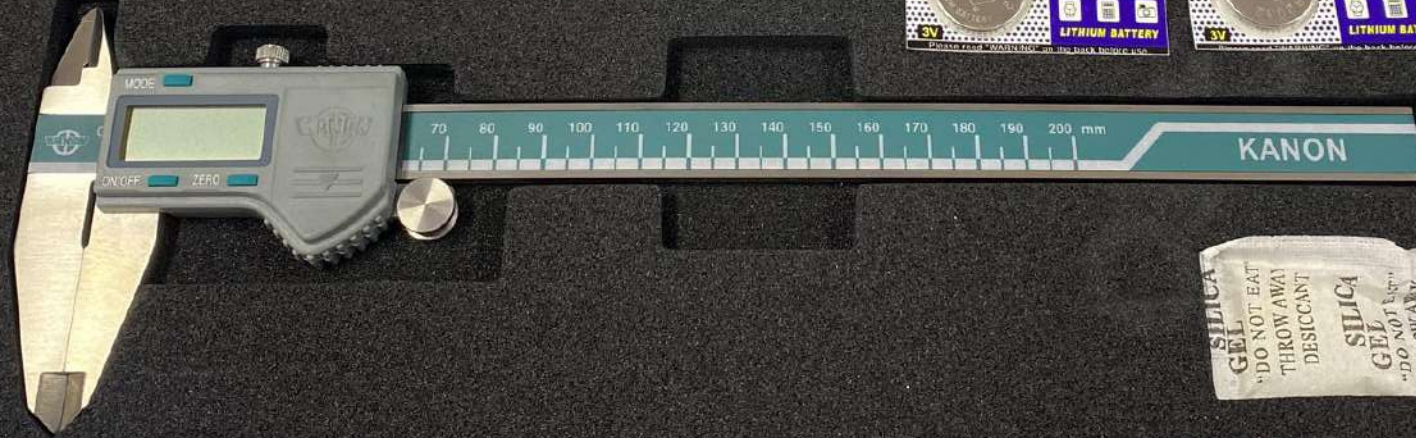


KANON

**KANON**



User's Manual  
Electronic Digital Caliper  
166 Series, 0-150mm 0-200mm 0-300mm



SILICA GEL  
DO NOT EAT  
THROW AWAY  
DESICCANT

SILICA GEL  
DO NOT EAT  
THROW AWAY

WATERPROOF DIGITAL CALIPERS IP67

150mmx0.01  
100-125mmx0.01  
951-10  
10mm 0.01mm

NO  
UGE  
150mm 0.01

SAC  
PROMAR

EVO  
Model No. DM-1350  
6x10





KANDON  
Dial Error  
1012-10

KANDON

PROOF DIGITAL CALIPERS IP68  
ÇOK FOMKSİYONLU MİM



Outside Micrometer  
484-60 25-50mm x 0.01

**KANON**  
User's Manual  
IP67 Waterproof Digital Caliper  
160 Series, 0-150mm 0-200mm 0-300mm  
MAINTENANCE INSTRUCTIONS



SM  
ROMA

Model No. DM-150  
EVA



KANON

## MEASURING INSTRUCTIONS

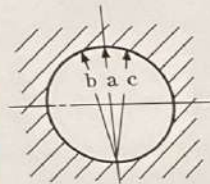


Fig. 1

1. Install dial indicator on cylinder gauge shank.
  2. Install such an interchangeable rod and washer on the gauge as are suited to applicable range including the bore to be measured.
  3. Make adjustment so that dial indicator is set at zero.
- The zero adjustment is accomplished alternatively by the following methods.

a) Adjustment with master ring

This method is suitable for a mass-production or regular production model. Prepare a master ring and insert it into the gauge for zero adjustment of the dial indicator. Fit the gauge into a cylinder whose bore to be measured. The gauge is guided with a guide piece normal to the measuring line (the central axis connecting the center lines

No.1	No.2	No.3	No.4	No.5	No.6	No.7	No.8	No.9
6.0mm	6.5mm	7.0mm	7.5mm	8.0mm	8.5mm	9.0mm	9.5mm	10mm



WATERPROOF DIGITAL  
KANON