

VÖRKER



EXTRA UZUN MATKAP UÇLARI DIN1869(N tipi)

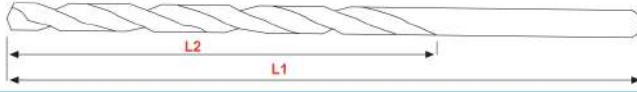


KOD	ÖLÇÜ	L1	L2
DIN1869-1			
VR-186910200	2.0mm	125	85
VR-186910250	2.5mm	140	95
VR-186910300	3.0mm	150	100
VR-186910350	3.5mm	165	115
VR-186910400	4.0mm	175	120
VR-186910420	4.2mm	180	125
VR-186910450	4.5mm	185	125
VR-186910500	5.0mm	195	135
VR-186910550	5.5mm	205	140
VR-186910600	6.0mm	205	140
VR-186910650	6.5mm	215	150
VR-186910700	7.0mm	225	155
VR-186910750	7.5mm	225	155
VR-186910800	8.0mm	240	165
VR-186910850	8.5mm	240	165
VR-186910900	9.0mm	250	175
VR-186910950	9.5mm	250	175
VR-186911000	10.0mm	265	185
VR-186911050	10.5mm	265	185
VR-186911100	11.0mm	280	195
VR-186911150	11.5mm	280	195
VR-186911200	12.0mm	295	205
VR-186911250	12.5mm	295	205
VR-186911300	13.0mm	295	205

DIN1869-2



VR-186920200	2.0mm	160	110
VR-186920250	2.5mm	180	120
VR-186920300	3.0mm	190	130
VR-186920350	3.5mm	210	145
VR-186920400	4.0mm	220	150
VR-186920450	4.5mm	235	160
VR-186920500	5.0mm	245	170
VR-186920550	5.5mm	260	180
VR-186920600	6.0mm	260	180
VR-186920650	6.5mm	275	190
VR-186920700	7.0mm	290	200
VR-186920750	7.5mm	290	200
VR-186920800	8.0mm	305	210
VR-186920850	8.5mm	305	210
VR-186920900	9.0mm	320	220
VR-186920950	9.5mm	320	220
VR-186921000	10.0mm	340	235
VR-186921050	10.5mm	340	235
VR-186921100	11.0mm	365	250
VR-186921150	11.5mm	365	250
VR-186921200	12.0mm	375	260
VR-186921250	12.5mm	375	260
VR-186921300	13.0mm	375	260



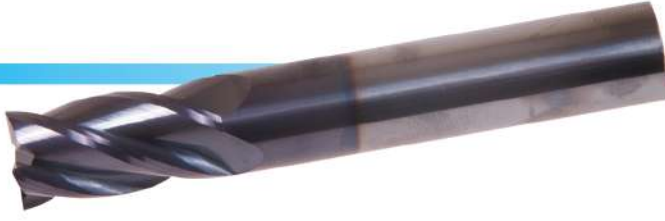
EXTRA UZUN MATKAP UÇLARI DIN1869(N tipi)

KOD	ÖLÇÜ	L1	L2
DIN1869-3			
VR-186930200	2.0mm	160	110
VR-186930250	2.5mm	180	120
VR-186930300	3.0mm	240	160
VR-186930350	3.5mm	265	180
VR-186930400	4.0mm	280	190
VR-186930450	4.5mm	295	200
VR-186930500	5.0mm	315	210
VR-186930550	5.5mm	330	225
VR-186930600	6.0mm	330	225
VR-186930650	6.5mm	350	235
VR-186930700	7.0mm	370	250
VR-186930750	7.5mm	370	250
VR-186930800	8.0mm	390	265
VR-186930850	8.5mm	390	265
VR-186930900	9.0mm	410	280
VR-186930950	9.5mm	410	280
VR-186931000	10.0mm	430	295
VR-186931050	10.5mm	430	295
VR-186931100	11.0mm	455	310
VR-186931150	11.5mm	455	310
VR-186931200	12.0mm	480	330
VR-186931250	12.5mm	480	330
VR-186931300	13.0mm	480	330

KARBÜR MATKAP UÇLARI DIN6539



KOD	ÖLÇÜ	L1	L2
VR-65390100	1.0mm	38	12
VR-65390150	1.5mm	38	12
VR-65390200	2.0mm	38	12
VR-65390250	2.5mm	43	14
VR-65390300	3.0mm	46	16
VR-65390320	3.2mm	46	16
VR-65390330	3.3mm	46	16
VR-65390350	3.5mm	52	20
VR-65390400	4.0mm	55	22
VR-65390420	4.2mm	55	22
VR-65390450	4.5mm	58	24
VR-65390500	5.0mm	62	26
VR-65390550	5.5mm	66	28
VR-65390600	6.0mm	66	28
VR-65390650	6.5mm	70	31
VR-65390700	7.0mm	74	34
VR-65390750	7.5mm	74	34
VR-65390800	8.0mm	79	37
VR-65390850	8.5mm	79	37
VR-65390900	9.0mm	84	40
VR-65390950	9.5mm	84	40
VR-65391000	10.0mm	89	43
VR-65391050	10.5mm	89	43
VR-65391100	11.0mm	95	47
VR-65391150	11.5mm	95	47
VR-65391200	12.0mm	102	51
VR-65391250	12.5mm	102	51
VR-65391300	13.0mm	102	51
VR-65391350	13.5mm	102	51
VR-65391400	14.0mm	107	54
VR-65391450	14.5mm	111	56
VR-65391500	15.0mm	111	56
VR-65391550	15.5mm	115	58
VR-65391600	16.0mm	115	58
VR-65391650	16.5mm	119	60
VR-65391700	17.0mm	119	60
VR-65391750	17.5mm	123	62
VR-65391800	18.0mm	123	62
VR-65391850	18.5mm	127	64
VR-65391900	19.0mm	127	64
VR-65391950	19.5mm	127	64
VR-65392000	20.0mm	131	66



4 AĞIZ KARBÜR PARMAK FREZELER DIN846

KOD	ÖLÇÜ	L1	L2	KOD	ÖLÇÜ	L1	L2
VR-65280100	1.0mm	50	3	VR-65280900	9.0mm	75	25
VR-65280150	1.5mm	50	4	VR-65281000	10.0mm	75	25
VR-65280200	2.0mm	50	6	VR-65281200	12.0mm	75	30
VR-65280250	2.5mm	50	6	VR-65281400	14.0mm	80	35
VR-65280300	3.0mm	50	8	VR-65281600	16.0mm	100	40
VR-65280400	4.0mm	50	10	VR-65281800	18.0mm	100	40
VR-65280500	5.0mm	50	13	VR-65282000	20.0mm	100	40
VR-65280600	6.0mm	50	15	VR-65282200	22.0mm	105	40
VR-65280700	7.0mm	63	19	VR-65282400	24.0mm	105	40
VR-65280800	8.0mm	60	20	VR-65282500	25.0mm	105	40



PTG

4 AĞIZ KARBÜR PARMAK FREZELER UZUN

KOD	ÖLÇÜ	L	l	d
P84254503	3.0mm	20	58	6
P84254504	4.0mm	20	58	6
P84254505	5.0mm	25	63	6
P84254506	6.0mm	25	75	6
P84254508	8.0mm	28	75	8
P84254510	10.0mm	35	75	10
P84254512	12.0mm	45	100	12
P84254514	14.0mm	50	100	14
P84254516	16.0mm	50	100	16
P84254518	18.0mm	50	100	18
P84254520	20.0mm	60	120	20



2 AĞIZ KARBÜR PARMAK FREZELER

KOD	ÖLÇÜ	L	l	d
P84252802	2.0mm	6	50	6
P84252803	3.0mm	6	50	6
P84252804	4.0mm	8	50	6
P84252805	5.0mm	8	50	6
P84252806	6.0mm	19	63	6
P84252808	8.0mm	19	63	8
P84252810	10.0mm	22	70	10
P84252812	12.0mm	25	75	12
P84252814	14.0mm	30	88	14
P84252816	16.0mm	32	88	16
P84252818	18.0mm	36	100	18
P84252820	20.0mm	38	100	20

PARMAK FREZELER DIN844-BN HSS (M2 çelik)



KOD	ÖLÇÜ	L1	L2
VR-84410200	2.0mm	51	7
VR-84410250	2.5mm	52	8
VR-84410300	3.0mm	52	8
VR-84410400	4.0mm	55	11
VR-84410500	5.0mm	57	13
VR-84410600	6.0mm	57	13
VR-84410700	7.0mm	66	16
VR-84410800	8.0mm	69	19
VR-84410900	9.0mm	69	19
VR-84411000	10.0mm	72	22
VR-84411100	11.0mm	79	22
VR-84411200	12.0mm	83	26
VR-84411300	13.0mm	83	26
VR-84411400	14.0mm	83	26
VR-84411500	15.0mm	83	26
VR-84411600	16.0mm	92	32
VR-84411700	17.0mm	92	32
VR-84411800	18.0mm	92	38
VR-84411900	19.0mm	104	38
VR-84412000	20.0mm	104	38
VR-84412100	21.0mm	104	38
VR-84412200	22.0mm	104	38
VR-84412300	23.0mm	121	38
VR-84412400	24.0mm	121	45
VR-84412500	25.0mm	121	45
VR-84412600	26.0mm	121	45
VR-84412700	27.0mm	121	45
VR-84412800	28.0mm	121	45
VR-84412900	29.0mm	121	45
VR-84413000	30.0mm	121	45
VR-84413100	31.0mm	133	53
VR-84413200	32.0mm	133	53
VR-84413300	33.0mm	133	53
VR-84413400	34.0mm	133	53
VR-84413500	35.0mm	133	53
VR-84413600	36.0mm	133	53
VR-84413800	38.0mm	133	53
VR-84414000	40.0mm	133	53



VÖRKER

PARMAK FREZELER DIN844-BN HSS (M2 çelik) UZUN

KOD	ÖLÇÜ	L1	L2
VR-84420200	2.0mm	54	10
VR-84420250	2.5mm	56	12
VR-84420300	3.0mm	56	12
VR-84420400	4.0mm	63	19
VR-84420500	5.0mm	68	24
VR-84420600	6.0mm	68	24
VR-84420700	7.0mm	80	30
VR-84420800	8.0mm	88	38
VR-84420900	9.0mm	88	38
VR-84421000	10.0mm	95	45
VR-84421200	12.0mm	110	53
VR-84421300	13.0mm	110	53
VR-84421400	14.0mm	110	53
VR-84421500	15.0mm	110	53
VR-84421600	16.0mm	123	63
VR-84421700	17.0mm	123	63
VR-84421800	18.0mm	123	63
VR-84421900	19.0mm	123	63
VR-84422000	20.0mm	141	75
VR-84422200	22.0mm	141	75
VR-84422400	24.0mm	166	90
VR-84422500	25.0mm	166	90
VR-84422800	28.0mm	166	90
VR-84423000	30.0mm	166	90
VR-84423200	32.0mm	186	106
VR-84423400	34.0mm	186	106
VR-84423600	36.0mm	186	106
VR-84424000	40.0mm	217	125



VÖRKER

TEK AĞIZ ALÜMİNYUM FREZE HSS

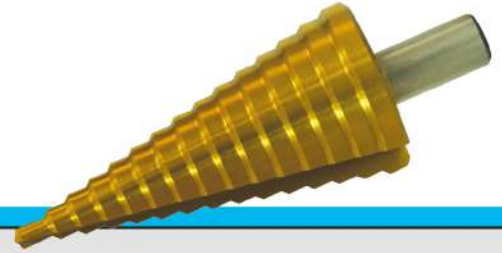
KOD	ÖLÇÜ	d	L1	L2
VR-8460400	4.0mm	8	60	12
VR-8460401	4.0mm	8	100	23
VR-8460500	5.0mm	8	60	14
VR-8460501	5.0mm	8	80	23
VR-8460600	6.0mm	8	60	14
VR-8460601	6.0mm	8	100	25
VR-8460800	8.0mm	8	80	14
VR-8460801	8.0mm	8	120	25
VR-8461000	10.0mm	10	120	25

KADEMELİ SAC DELME MATKABI HSS (M2 çelik)



KOD	ÖLÇÜ
VR-13412D	4 X 12
VR-13420D	4 X 20
VR-13432D	4 X 32
VR-13439D	4 X 39

KADEMELİ SAC DELME MATKABI HSS - TIN(M2 çelik)



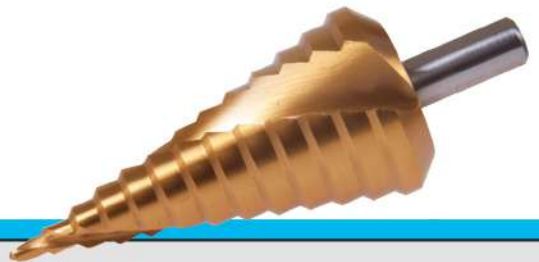
KOD	ÖLÇÜ
VR-14412T	4 X 12
VR-14420T	4 X 20
VR-14432T	4 X 32
VR-14439T	4 X 39
VR-13460D	6 X 50

KADEMELİ SAC DELME MATKABI HELİS (M2 çelik)

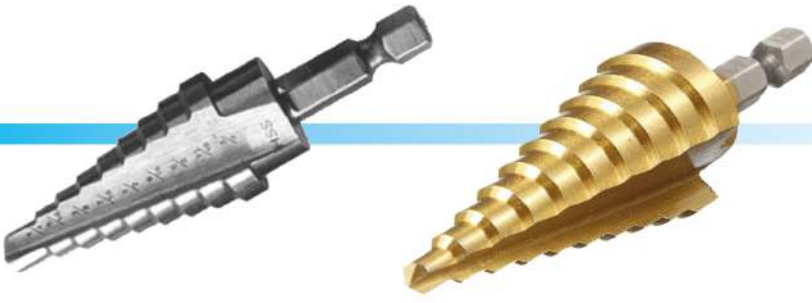


KOD	ÖLÇÜ
VR-10412S	4 X 12
VR-10420S	4 X 20
VR-10432S	4 X 32
VR-10439S	4 X 39

KADEMELİ SAC DELME MATKABI HELİS - TIN (M2 çelik)



KOD	ÖLÇÜ
VR-11412T	4 X 12
VR-11420T	4 X 20
VR-11432T	4 X 32
VR-11439T	4 X 39



VÖRKER

KADEMELİ SAC DELME MATKABI 1/4" BİTS (M2 çelik)

KOD	ÖLÇÜ
VR-16412B	4 X 12
VR-16420B	4 X 20
VR-16432B	4 X 32
VR-17412T	4 X 12 TIN KAPLI
VR-17420T	4 X 20 TIN KAPLI
VR-17432T	4 X 32 TIN KAPLI



KADEMELİ SAC DELME MATKABI HSS - KONİK (M2 çelik)

KOD	ÖLÇÜ
VR-18314D	3 X 14
VR-18315D	8 X 20
VR-18316D	16 X 30,5
VR-18317D	24 X 40
VR-18318D	36 X 50
VR-18319D	40 X 61



KADEMELİ SAC DELME SETLER

KOD	ÖLÇÜ	ÖZELLİK
VR-10412D	4 X 12 - 4 X 20 - 4 X 32	HSS
VR-10413D	4 X 12 - 4 X 20 - 4 X 32	HSS - TIN
VR-10415S	4 X 12 - 4 X 20 - 4 X 32	HELİS
VR-10420T	4 X 12 - 4 X 20 - 4 X 32	HELİS - TIN

VÖRKER

HAVŞA FREZE DIN335 HSS 60°



KOD	ÖLÇÜ	L	d
VR-3350630	6.3mm	44	6
VR-3350830	8.3mm	52	6
VR-3351040	10.4mm	52	6
VR-3351240	12.4mm	52	10
VR-3351650	16.5mm	60	10
VR-3352050	20.5mm	68	10
VR-3352500	25.0mm	84	12

VÖRKER

HAVŞA FREZE DIN335 HSS-CO 90°



KOD	ÖLÇÜ	L	d
VR-33510630	6.3mm	44	6
VR-33510830	8.3mm	52	6
VR-33511040	10.4mm	52	6
VR-33511240	12.4mm	52	10
VR-33511650	16.5mm	60	10
VR-33512050	20.5mm	68	10
VR-33512500	25.0mm	84	12
VR-33512800	28.0mm	87	14
VR-33513100	31.0mm	90	16
VR-33514000	40.0mm	97	16



VÖRKER

HAVŞA FREZE
DIN335 HSS TIN 90°

KOD	ÖLÇÜ	L	d
VR-3350630T	6.3mm	44	6
VR-3350830T	8.3mm	52	6
VR-3351040T	10.4mm	52	6
VR-3351240T	12.4mm	52	10
VR-3351650T	16.5mm	60	10
VR-3352050T	20.5mm	68	10
VR-3352500T	25.0mm	84	12
VR-3353100T	31.0mm	90	16
VR-3354000T	40.0mm	97	16



VÖRKER

DELİKLİ HAVŞA FREZE
DIN335 HSS-TICN

KOD	ÖLÇÜ
VR-3350205	2-5
VR-3350510	5-10
VR-3351015	10-15
VR-3351520	15-20
VR-3352025	20-25
VR-3352530	25-30
VR-3353035	30-35



VÖRKER

HAVŞA FREZE SETLERİ
DIN335 HSS

KOD	ÖLÇÜ
VR-33506	6.3mm, 8.3mm, 10.4mm, 12.4mm, 16.5mm, 20.5mm
VR33506T	6.3mm, 8.3mm, 10.4mm, 12.4mm, 16.5mm, 20.5mm TIN KAPLAMA

VÖRKER

